



# COOLANT SYSTEM SERVICE SOLUTIONS

All the tools required to service coolant systems





## INSPECT



### Coolant and Battery Refractometer

This can be used for measuring the freezing point of either propylene and ethylene glycol based cooling systems. It can also be used for checking the strength of electrolyte solution in batteries.

This precision instrument features high quality optics with ultra smooth focusing on the body.

Coolant scale range: 32 degrees F to -60 degrees F.

**No. 75240** – Coolant and battery refractometer.



**No. 75133**

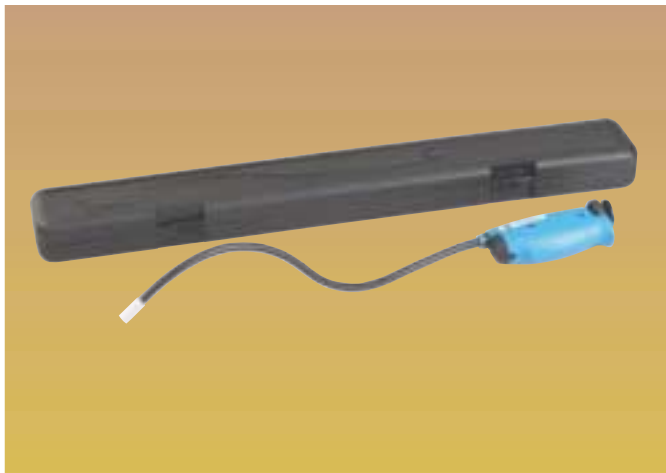
**No. 75134**

### Econo-Clean Coolant Service Accessories

To ensure coolant will provide adequate protection to the vehicle, the coolant should be adjusted to the manufacturer's specifications. These accessories will help you quickly test coolant.

**No. 75133** – Pocket pH pen — Quickly shows the pH of the coolant, whether used or recycled.

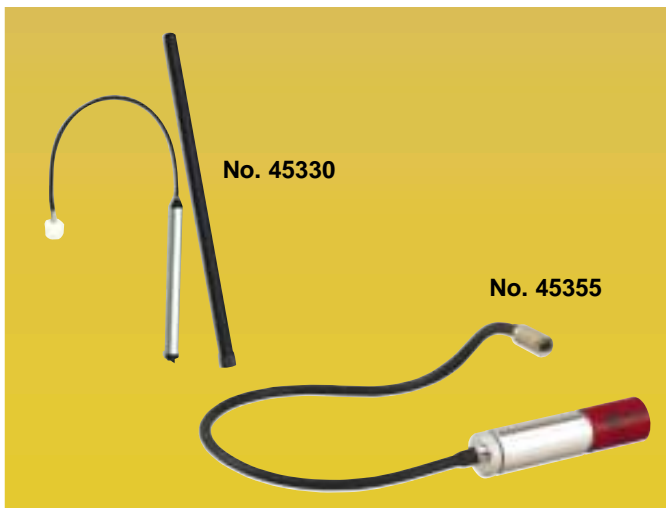
**No. 75134** – Coolant test strips — Just dip a strip in coolant and it shows the freeze point and the pH; bottle of 50 strips.



### Fluorescent Dye Flex-Scope

- Quick detection of leak dye in hard-to-see and reach places.
- Ability to inspect inside components.
- Confirms leaks where component removal would normally be required.
- Reduces diagnostic time.
- Saves time trying to diagnose A/C evaporator leaks.
- Inspect the top side of fuel tanks for EVAP leaks without removal.
- Saves costs by eliminating the need to remove and replace unrelated components.

**No. 3591** – 18" Flex-View in a sturdy case.



**No. 45330**

**No. 45355**

### Inspection Lights

The applications for these handy tools are practically endless... check oil and coolant leaks on cylinder heads, intake manifolds, engine blocks, also oil leaks on transmissions, power steering, etc.

If you can see it, you can pick it up with the No. 45355 Inspection Light. This light has a magnetic casing surrounding a single LED light. It also has a magnetic base and flexible shaft that keeps the light pointed at the work area, allowing you to work hands free.

**No. 45355** – Inspection light with magnetic tip and base.

Fiber optics provide a bright light; the 15" flexible shaft is just 7.6 mm in diameter. Powered by three AA batteries.

**No. 45330** – Inspection light.

## Deluxe Cooling System Analyzer

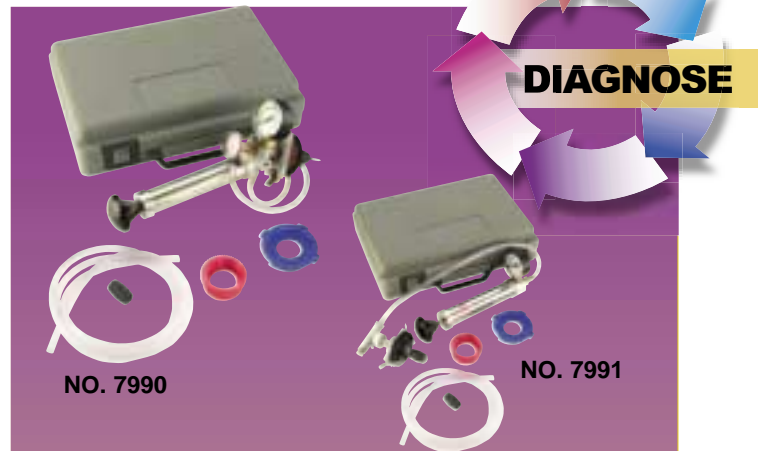
Features a patented, inflatable bladder sealing system. This means it attaches to the cooling systems of most passenger, light commercial vehicles, and motorcycle applications without the need for multiple adapters. The thermometer measures system temperature while the engine is running and under pressure. A fluid drain hose allows the coolant to be returned to the coolant reservoir or safely collected in an approved container for recycling.

Note: Will not work on Saturn, Kia or Jeep vehicles with the plastic reservoir.

**No. 7990** – Deluxe cooling system analyzer. Wt., 3 lbs., 3 oz.

**No. 7991** – Cooling system pressure tester. Wt., 3 lbs., 2 oz.

**No. 70600-96** – Replacement bladder. Wt., 1 oz.



## Hose Pinch-off Pliers Set

- Shuts off flow through vacuum lines, fuel lines, coolant lines, etc.
- Cocking ratchet mechanism holds pivoting jaws tightly in place. Heavy-duty swivel jaws pivot to assure parallel pinching.
- These three tools are available separately:
  - 4510-8** – 8" tool for small hoses and tight areas
  - 4510-10** – 10" tool for radiator and vacuum lines
  - 4510-12** – 12" tool for radiator and vacuum lines

**No. 4510** – Set of three pinch-off tools. Wt., 2 lbs., 11 oz.



## Combustible Gas Detector

The TIF8800 series are general purpose combustible gas detectors which may be used in almost any situation where a combustible gas, vapor or residue needs to be found. Among the many applications:

- Fuel Tank ● Fuel Lines ● Fuel Filter ● A.I.R. Lines
- Carburetor/Fuel Rail ● Intake Manifold ● Head Gasket
- Exhaust Manifold ● Exhaust Pipe ● Catalytic Converter

The unique, flexible 15" stainless probe allows you to access hard-to-reach places. Features automatic warm-up and is ideal for a tremendous range of uses and invaluable for safety in many applications. Includes its own rechargeable Ni-Cad batteries for years of use.

### Features

- Automatic warm up ● Broad band detection ● Low battery indicator
- Recharger and ABS case ● Sensitivity adjust control
- Audible signal ● LED leak intensity lights (**TIF8800A** & **TIF8850**)
- Audio mute button to silence the alarm (**TIF8850**)

### Partial List of Detectable Compounds with Minimum Detectable Concentration

- Methane (500 ppm) ● Propane (R290) (500 ppm)
- Ammonia (R717) (20 ppm) ● Gasoline (1 ppm)
- Carbon Dioxide (500 ppm)

**No. TIF8800A** – Combustible Gas Detector

**No. TIF8800** – Combustible Gas Detector

**No. TIF8850** – Combustible Gas Detector

### Replacement parts

**TIF548** – Custom carrying case **TIF8801** – Sensing tip

**TIF8803A** – 115V battery charger **TIF8805** – Cigarette lighter adapter

**TIF8806A** – Rechargeable Ni-Cad batteries

**TIF8806B** – 220V battery charger



### Specifications

Operating Temp.....	32° to 125° F (0° to 52° C)
Power Supply.....	(2) 2.4V Ni-Cad Batteries
Battery Life.....	4 Hours/Charge
Response Time.....	Instantaneous
Warm-up Time.....	30 seconds
Probe/Cord Length.....	15" (38 cm)
Dimensions.....	8" x 3" x 1.8" (20 cm x 7.6 cm x 5 cm)
Weight.....	15.5 oz (434 grams)
Ultimate Sensitivity.....	5-50 ppm



**SERVICE**

# COOLTECH™

## 75700 COOLXCHANGE

Works on  
pressurized and  
non-pressurized  
cooling systems.



**10 Minute  
Exchange  
Process**



**No. 75700**

### Specifications

**Power Supply** – 90 psi shop air

**Tanks** – Internal waste – 15 gallon capacity

– External supply (2) 5 gallon capacity (removable)

**Dimensions:** 47" H x 26" W x 33" D (119 cm x 66 cm x 84 cm)

**Medium Step Adapter** . . . . . Two included;  
fits hose size 1-1/4", 1-3/8" and 1-1/2"

**Large Step Adapter** . . . . . Two included;  
fits hose size 1-3/4", 2", and 2-1/4"

## Coolant Exchanger... Designed With the User in Mind

### Increase your profits

- Our 10 minute exchange process means no more waiting for the engine to warm up!

### Safety First

- Our "engine Off" feature removes pulleys, belts, and fan blades from the safety equation.
- No additional ventilation required.
- Vacuum mode creates a "push/pull" exchange process allowing the technician to safely remove high pressure in a hot system.
- "Hands-off" transfer of used coolant to a bulk tank prevents spills and helps protect the technician.

### Simple to Operate

- Two clearly marked valves and an easy-to-read gauge make this machine very easy to use.
- Sight glass clearly shows the amount of coolant in the waste tank.
- One valve controls the flow of coolant; process is easy to understand—no special training needed.
- No electricity required. 90 psi shop air drives the exchange process, as well as the 2 gpm pump on the waste tank.

### Designed to Survive

- Impact-resistant polypropylene cabinet will not scratch or dent vehicle.
- Cabinet is impervious to chemicals commonly used in the shop.
- Large, inflatable tires carry a well-balanced platform easily across any shop floor.
- Easy to maneuver between bays and vehicles.

### Extra Design Features

- Two external new coolant supply tanks allow on-board storage of two different coolant types.
- Graduations on tanks show user the amount of new coolant on board.
- On-board storage of step adapters.
- Adapter kit included.
- No hoses to cut.
- 96" hoses can be neatly stored on unit.
- One year warranty.

**No. 75700** – Coolant exchange unit. Wt., 180 lbs.

**No. 75115** – Replacement new coolant 5 gallon tank.

## AF PRO Coolant Exchanger

**Speeds Service** — Forces used coolant out and simultaneously replaces it with new or recycled fluid; a typical job takes just 15 to 20 minutes.

**Simplifies System Diagnosis** — With the same hook-up to the cooling system, you can check for system leaks, verify cap operation, and check the function of the overflow tank.

**Cuts Your Disposal Costs** — Eliminates the need to flush the system with water, which creates up to eight times more waste that must be handled and disposed of.

**Quickly Fills An Empty System** — The vacuum fill function quickly and cleanly fills an empty system with new coolant. It also virtually eliminates any damaging air which remains in the system.

**Tank-Within-A-Tank Design** — Two 30 quart tanks are incorporated into the interior of the cabinet, saving space and eliminating the need for “add-on” storage.

**Sight Glass** — Clearly shows you the amount of coolant in the tank.

**Powered Discharge** — “Hands-off” transfer of used coolant to a bulk tank prevents spills and helps protect the technician.

**Simple to Operate** — One valve controls the flow of coolant; process is easy to understand so no special training is needed.

**No. 7560A** – AF PRO plus coolant exchanger.  
Wt., 125 lbs.



**Specifications**

Dimensions	48" H x 25" W x 26" D (121.9 cm x 61.6 cm x 66 cm)
Weight	125 lbs (56.7 kg)
Power Source	12V DC and compressed air, 75 psi minimum at 5 cfm
Medium Step Adapter	Two included; fits hose size 1-1/4", 1-3/8" and 1-1/2"
Large Step Adapter	Two included; fits hose size 1-3/4", 2", and 2-1/4"

## Coolant Refiller With Air Lock Preventer

- 26" Hg vacuum refills cooling system without air lock.
- Eliminates the need for “bleeding.”
- Checks for system leaks and utilizes OEM approved technology.
- Universal “fits all” cone adapter.
- Streamline design for fast, efficient operation.
- Built-in gauge protector.

**No. 75260** – Coolant refiller with air lock preventer.



## Multipurpose Cleaning Gun

- Perfectly suited for quick and efficient cooling system flushing. Simply attach it to radiator or heater hoses and you're in business.
- Two simple connections: one to shop air and one to a typical water faucet.

Note: While normal water pressure will handle the majority of cooling system flushes, short blasts are sometimes needed to loosen some contaminants from within the system.

**No. 6043** – “Blast-Vac” multipurpose cleaning gun. Wt., 13 oz.





# REPAIR

## Fan Clutch Wrench Master Set

Conventional wrenches are just too wide for the job of removing the fan clutch assembly on some engines. Here's the solution: You hold the fan clutch stationary with the clutch holder tool, and turn the fan clutch nut with the special wrench. Most wrenches feature a square drive for attaching a breaker bar for extra torque. Time savers when replacing water pumps, or for any other front engine service in body or repair shops. Holding tools and wrenches are available individually and in sets (see chart below.)

**No. 7885** – Fan Clutch Wrench Master Set – Includes all individual components except Nos. 7925-1, 7925-2, and 6068. Includes molded carrying case. Wt., 16 lbs.



### Individual Holding Tools, Wrenches, and Sets

Year	Make / Model	Engine	U.S. Size	Metric Size	OTC Tool No.	OTC Tool Set	Global Number	Ford Tool No.
1983-1993	Ford / F-Series Truck, E-Series Van	6.9L, 7.3L Diesel	3 1/4" 17/8"	82mm 47mm	<b>7205E1</b> <b>7205E2</b>	<b>7205E</b>	303-213 303-214	T83T-6312-A T83T-6312-B
1984-1991	Ford / F-Series Truck, E-Series Van	4.9L Inline 6	2 1/4" 17/16"	57mm 36mm	<b>7204E1</b> <b>7204E2</b>	<b>7204E</b>	303-239 303-240	T84T-6312-C T84T-6312-D
1987-1997	Ford / F-Series Truck, E-Series Van	5.0L, 5.8L, 7.5L V8	2 1/4" 17/16"	57mm 36mm	<b>7204E1</b> <b>7204E2</b>	<b>7204E</b>	303-239 303-240	T84T-6312-C T84T-6312-D
1992-1996	Ford / F-Series Truck, E-Series Van	4.9L Inline 6	2 1/4" 19/16"	57mm 39mm	<b>7204E1</b> <b>7823</b>		303-239 308-454	T84T-6312-C T93T-6312-B
1994-1997	Ford / F-Series Truck, E-Series Van	7.3 D.I. Diesel	2 1/8" 17/8"	54mm 47mm	<b>7818</b> <b>7205E2</b>	<b>7817</b>	303-478 303-454	T94T-6312-AH T83T-6312-B
1983-1989	Ford / Ranger, Bronco II	2.8L, 2.9L V6	2 1/4" 17/16"	57mm 36mm	<b>7204E1</b> <b>7204E2</b>	<b>7204E</b>	303-239 303-240	T84T-6312-C T84T-6312-D
1990-2002	Ford / Ranger, Explorer, Bronco II	4.0L V6	2 1/4" 17/16"	57mm 36mm	<b>7204E1</b> <b>7204E2</b>	<b>7204E</b>	303-239 303-240	T84T-6312-C T84T-6312-D
1996-2001	Ford / Explorer	5.0L V8	2 13/16" 17/16"	72mm 36mm	<b>7820</b> <b>7821</b>	<b>7819</b>	303-559 303-558	T96T-6312-B T96T-6312-A
1998-2002	Ford / F-Series Truck, E-Series Van	7.3 DIT Diesel	3 1/4" 17/8"	82mm 47mm	<b>7205E1</b> <b>6068</b>		303-213 303-591	T83T-6312-A N/A
1988-2002	Dodge / Full Size Pickup, Full Size Van	5.9L Diesel	3" 17/16"	76mm 36mm	<b>7887</b> <b>7204E2</b>			N/A N/A
1992-2002	Dodge / Dakota, Ram Pickup, Ram Van	3.9L V6, 5.2L, 5.9L V8 8.0L V10	3" 17/16"	76mm 36mm	<b>7887</b> <b>7204E2</b>			N/A N/A
1993-1998	Jeep / Grand Cherokee	5.2L V8	3" 17/16"	76mm 36mm	<b>7887</b> <b>7204E2</b>			N/A N/A
1996-1999	GM / Full Size Pickup, Full Size Van, Astro / Safari Vans, S-Truck, Blazer / Jimmy, Yukon / Tahoe	4.3L V6 5.0L, 5.7L V8	2 3/8" 17/16"	60mm 36mm	<b>7855</b> <b>7204E2</b>	<b>7854</b>		N/A N/A
1994-1999	Navistar / Medium-duty Trucks and School Buses	466	2" 2 1/4"	51mm 57mm	<b>7925-1</b> <b>7925-2</b>	<b>7925</b>		N/A N/A

## Ford Heater Hose Disconnect Tool

This tool is the only safe way of disconnecting spring-lock heater hose couplings found on Ford's 4.6L engines. It surrounds the fitting to prevent coolant from spraying, at the same time releasing the garter spring. Works on 1995 and newer Crown Victorias and Mercury Grand Marquis.

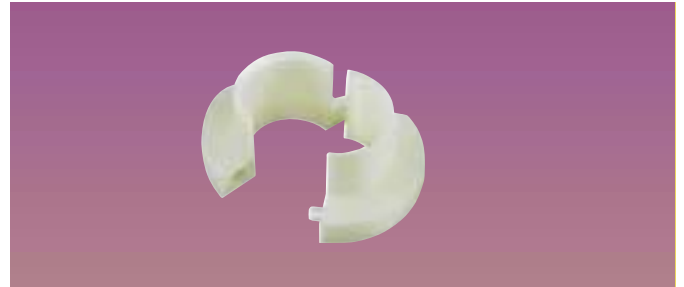
**No. 7808** – Ford heater hose disconnect tool. Wt., 2 oz. Same as Ford 303-520 (T95P-6A642-A).



## GM Heater Line Quick-Connect Release Tool

- Specially designed for separating quick-connect fittings on heater lines of 1999-2004 Chevy and GMC C/K trucks.
- Tool snaps around the hose and depresses the locking tabs simultaneously to disengage the fitting.

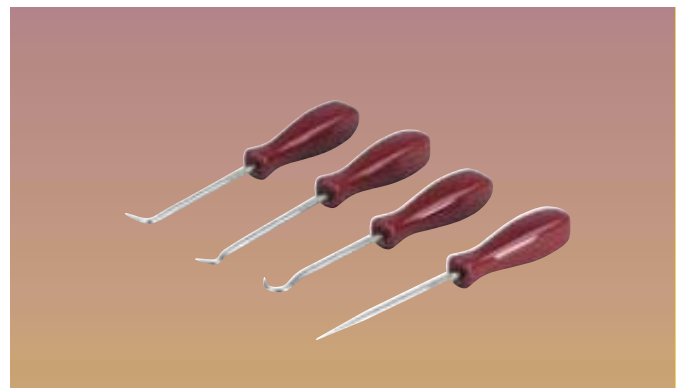
**No. 6046** – GM heater line quick-connect release tool. Wt., 2 oz. Similar to Kent-Moore J-43181.



## Mini Pick & Hook Set (4 pieces)

- Sturdy stainless steel points and shafts designed for marking, removing o-rings, accessing snap rings, and performing other tasks. Assorted angle tips allow you to reach awkward locations.
- Knurled shaft design enhances finger control for delicate jobs.

**No. 4515** – Mini pick and hook set.



## Hose Cutter – “Guillotine”

Hooks and cuts plastic lines and rubber hoses from 1/8" to 1" diameter. Compound mechanical leverage provides power. Spring-loaded blade returns to open position after use, so blade is not exposed.

- Replacement steel cutter blade No. 4511-1 is available.

**No. 4511** – Hose cutter tool. Wt., 8 oz.



## Straight-Blade Hose Cutter

- Cuts rubber hoses ranging from 1/4" to 1-1/2".
- Simply place hose in tool and squeeze handle to cut.
- Replacement steel cutter blade No. 4509-1 is available.

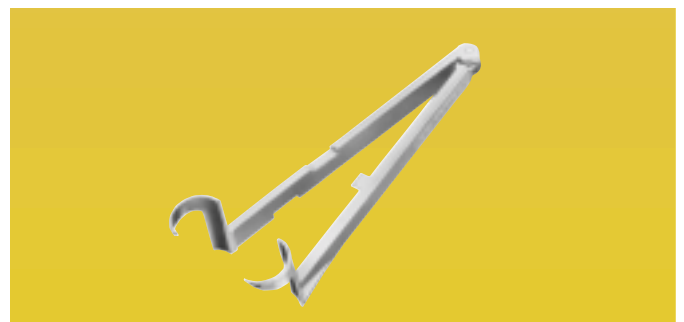
**No. 4509** – Straight blade hose cutter. Wt., 5 oz.



## GM Heater Line Quick-Disconnect Separator

- 1991 and newer GM vehicles with 3.1L, 3.4L, 3100, 3400, and 3800 V6 engines.

**No. 7895** – GM heater line quick-disconnect separator. Same as Kent-Moore J-38723.





**VERIFY**



## Cordless/Rechargeable True UV Light

- Twelve LEDS produce high intensity true UV light.
- Includes battery charger and UV-enhancing glasses.
- Three-hour battery life (continuously on).
- Momentary on/off button.
- 100,000 hour LED bulbs.
- Nickel metal hydride battery (does not develop a memory).
- Charger included.
- Weighs only 9 oz.
- One-year warranty.

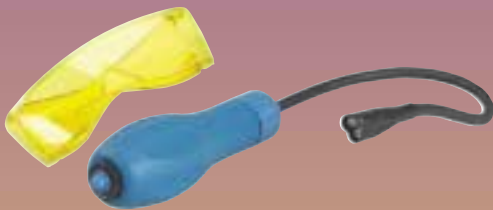
**No. 16345** – Cordless and rechargeable true UV LED light.

## Flex UV LED Light

Three LEDs affixed to a flexible shaft makes hard-to-reach spots readily accessible.

- Includes battery (3N size) and UV enhancing glasses.

**No. 16291** – Flexible true UV LED light.



## Radiator Coolant Dye

- Pinpoint leaks in radiators, hoses/fittings, water pumps, and head gaskets.
- Extended-life dye is specifically formulated for use in extended-life coolants. This eliminates the color distortion problem found in the existing regular radiator coolant dye when mixed with extended-life coolant.
- Extended-life dye is for use with red, orange or yellow extended-life coolants.
- Each bottle services one vehicle.

**No. 16266** – Extended-life radiator coolant dye.  
Six (1oz./30 ml) bottles.

**No. 16255** – Standard radiator coolant dye.  
Six 1/4 oz. (7.5 ml) bottles.



**No. 16255**



**No. 16266**

**SPX** **OTC** 1-800-533-6127  
www.otctools.com

*Service Solutions, a unit of SPX Corporation*

655 Eisenhower Drive, Owatonna, MN 55060-0095  
Phone: 507-455-7000, International Sales: 507-455-7223

**SPX** **ROBINAIR** 1-800-533-6127  
www.robinair.com

*Service Solutions, a unit of SPX Corporation*

655 Eisenhower Drive, Owatonna, MN 55060-0095  
Phone: 507-455-7000, International Sales: 507-455-7223